

Headteacher: Mrs Sally Dreckmann

Hawkins Close, Bognor Regis, West Sussex PO21 3LW

Phone & Fax: 01243 262318

office@rosegreeninfant.school

www.rosegreeninfant.school



NEWSLETTER – February 2023

Dear Parents and Carers,

It is hard to believe that it is almost half term! Your children have been working hard and learning so much. I have spent quite a lot of time in classrooms since Christmas and it is a delight to see what the children are doing and the progress that they are making. Everyone seems to be enjoying their topics, so please do ask them what they are learning about at school.

We are all getting to grips with a new way of teaching phonics and new resources, following whole school training at the beginning of term, but again, the children are amazing and are taking it all in their stride, even reminding us what we should be doing sometimes!

With regards

Mrs Sally Dreckmann

Parent Consultations

A letter will shortly be going out with an appointment time to meet your child's class teacher. Please do let the teacher know if the date given is not convenient. There will be a ten-minute slot for each appointment.

Fairtrade Fortnight

Fairtrade fortnight starts on Monday 27th

February until Sunday 12th March.

We will be talking to the children about Fairtrade products and how we can support farmers across the world. We would like you to look out for the Fairtrade logo on



the food you purchase and to bring in some examples of packaging for a display in school.

The 'Pantosaurus'

As part of our safeguarding curriculum, the children have been taught about the 'pants rule' through the advice from the NSPCC. Please look at the following link to find out more and share the song with your children.

<https://www.nspcc.org.uk/keeping-children-safe/support-for-parents/underwear-rule/>

World Book Day

To celebrate World Book Day, we would like the children to come to school



dressed as their favourite book character (or in their pyjamas) on **Friday 3rd March** (please note revised date), and to bring in their favourite bedtime story to share with the rest of the class. Children are very welcome to bring in slippers to wear at school but will also need appropriate footwear for outside play (and a warm coat!). A world book day token will be sent out after half term.

PTA Quiz Night

Please see attached details of a PTA Quiz Night for adults on Friday 24th March. We had one of these events last year and it was really successful - a great fun night. A copy of the entry form is also available from the school office. Please could they be returned by no later than 10th March.



The PTA now have enough funds to purchase a new interactive white board for the school hall, together with some new phonics books. We will let you know when these arrive and we are very

grateful for the fundraising the PTA do to support your children.

Easyfundraising

Do you shop online? Please see the attached sheet about an easy way to raise funds for the school.

PE Kit for Outside PE

Please can you make sure your child has a full PE kit in school every day. This should include leggings or joggers and plimsolls or trainers, as we will be going outside for PE as the weather improves. Please make sure that everything is clearly NAMED!

Thank You!

We would like to say a very big 'thank you' to Aldwick Parish Council for giving us a discretionary grant of £3,943. This money will be used towards a variety of equipment and resources for the classrooms as well as a den and food for Forest School. We have also received £400.75 commission from Cauliflower Cards following the purchase of the children's Christmas cards, mugs, wrapping paper etc.

School Website

Have you looked at our website recently? It's a great way of keeping up to date on what is happening at the school. Visit www.rosegreeninfant.school to have a look.

Pancake Day

Chartwells will be serving pancakes as part of their menu on Friday 24th February. If you order a hot dinner for your child on that day through ParentPay, they will automatically be given a choice of a pancake for desert.

Nuts in School

Please can we remind parents not to include nuts or products containing nuts in lunchboxes i.e Nutella, as we have children in school with severe nut allergies. Thank you.

Makaton Magic

Please see the attached sheet showing the signs the children have been learning during January.



And finally a few reminders:-

- Please can we remind parents / carers to let your class teacher or the school office know if someone else is collecting your child at the end of the day;
- Parking in the disabled parking bays at the front of the school is for blue badge holders and those with prior agreement only;
- Please can we ask parents to remind their children not to enter residents' driveways and gardens at the start and end of the school day. We are regularly receiving complaints about children entering residents' properties on their way home;
- Please remind children of road safety especially with the high volume of traffic around the school. We recently had a parent report that they saw a child run out into the crossroads at Anson/ Frobisher Road who was not looking and could easily have been knocked over.

Thank you

Dates for your Diary - more details to follow (New dates in **Red**)

Event	Date	Time
Dental Hygiene visit for Year R and Year 1	Thursday 2 nd February	
Year 1 Infant Agility at The Arena	Wednesday 8 th February	9.15 am
Half Term	Monday 13 th - Friday 17 th February	
Parent consultations	Weeks commencing 20 th & 27 th February	
Fairtrade Fortnight	27 th February - 12 th March	
World Book Day (children may come to school dressed as their favourite book character or in their pyjamas)	Friday 3 rd March	
Year 1 visit to Weald & Downland Museum	Tuesday 14 th March	
Red Nose Day (non-uniform)	Friday 17 th March	
Non-uniform day for donations towards the Easter egg hunt	Friday 24 th March	
PTA Quiz	Friday 24 th March	7.00 pm
Sponsored 'bunny bounce' and Easter egg hunt (more details to follow)	Wednesday 29 th March	
Easter Holidays	Monday 3 rd - Friday 14 th April	
Start of the Summer Term	Monday 17 th April	



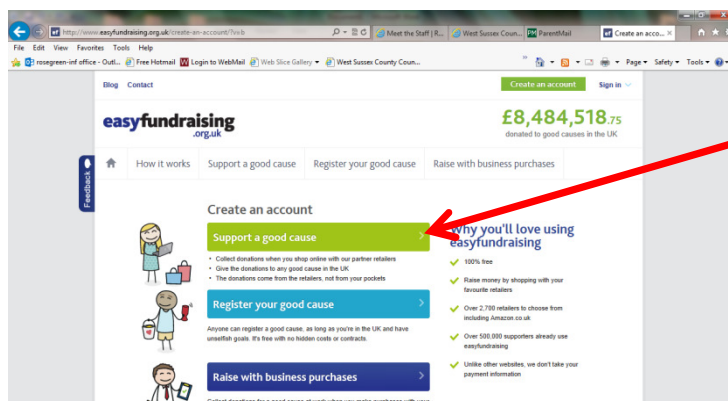
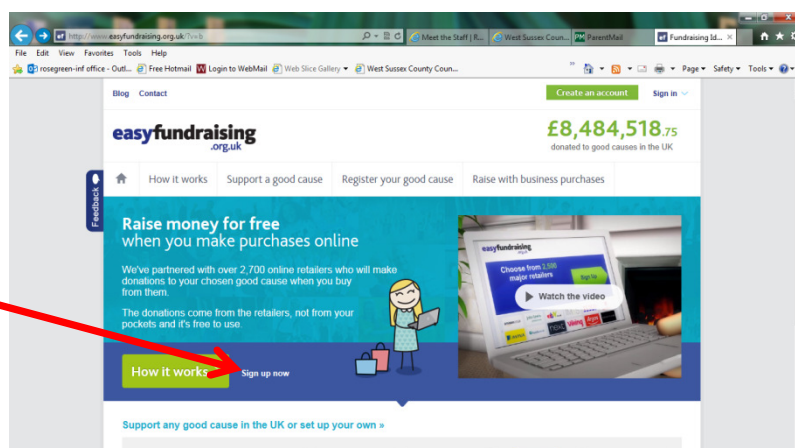
Do you shop online? Yes?

PLEASE HELP. ITS FREE AND WILL HELP TO RAISE FUNDS FOR OUR SCHOOL !!

Please can you look at the Easyfundraising website as the potential is huge! As an example, if you wanted to buy a book from Amazon for £10, first log onto the Easyfundraising website and then click on the link for Amazon. You will be directed to the usual Amazon website (including all their discounts etc.). **You can then purchase the book as usual.** The benefit for you / the school is that the school gets 2.5% of the purchase value. That only equates to 25p, but if all parents sign up and order items throughout the year it will soon mount up. There are over 2,700 retailers linked from this website including ...



WANT TO HELP? It's so easy.
Simply go to
www.easyfundraising.org.uk
and click on "Sign up now"



Click "Support a good cause" and then type
Rose Green Infant School into the search and
then click "Support this cause", fill in your details and
then shop!

Any commission you earn will automatically be sent
to our account every 3 months .

And that's it! Once you have registered you just log
on every time you shop online. You can even see
how much you have raised and the total raised so far.

**Please give it a try – if you need help registering just call into the office. We have put a link
to Easyfundraising on the school website too.**

Thank you so much!



Thought-Full: Mental Health Support Teams in Schools

Thought-Full are The Mental Health Support Team in Schools in West Sussex. We are a team of practitioners working in primary and secondary schools supporting schools with their whole school approach to mental health and wellbeing. As part of our work we offer school aged children support with mild to moderate mental health difficulties.

We can support children and young people who are experiencing the following:

mild to moderate low mood and/or anxiety, fears, worry, low self-esteem, sleep difficulties, eating problems (linked to mood and emotional issues) and young children with behavioural issues.

Our interventions are brief, evidence-based and CBT informed. We offer up to 10 sessions, which we can either offer as face-to-face or virtual sessions. Sessions take place in school hours, and are usually up to an hour in length. We will support your child and work collaboratively with them to develop tools of self-awareness which can be used in all areas of their life, now and in the future. Research shows these tools can be very effective for young people.

As part of our whole school approach, we offer a range of psychoeducational workshops to help you understand the signs, symptoms and treatment for mild to moderate mental health difficulties and recorded webinars for parents and carers to support you in supporting the emotional wellbeing of your child.

If you think that your child could benefit from our support, please contact Mrs Dreckmann, Headteacher, who will be able to talk through your concerns and make a referral if appropriate. Please see our website for some helpful websites and contact numbers that you can access for your own support, alongside that of your child's.

You can find us at: www.westsussex.gov.uk/Thought-Full

Or contact us at: Thought-Full@westsussex.gov.uk

If your child needs urgent support, please contact your GP, or if out of hours, call 111.

If your child is experiencing a mental health crisis and needs immediate support you can contact the YoungMinds Crisis messenger text service, by texting YM to 85258. They provide free 24/7 crisis support across the UK. You can also access The Sussex Mental Health Line, which is available 24/7 on 0800 0309 500.



P.T.A. QUIZ NIGHT

Including food

Friday 24th March 7.00pm for 7.30pm start

Make up your own team of **4 - 6 people**, of family & friends.
However, sorry no children though. This is a fun night for adults!

Price £10.00 per head, which includes a choice of
Jumbo Sausage, Battered Fish, Pea Fritter or
Vegetable Spring Roll & Chips
**Bring your own alcohol or soft drinks and glasses, and
some loose change for a fun game!**

Questions are fun and are not too serious, or taxing!!!
Prizes for the winning Team

Please complete and return the enclosed slip to the school office together with
the cash, or a cheque made payable to **Rose Green Infants PTA**
Last date for entry is 10th March

.....

Contact Name Child's Class Name..... E-mail Address.....

I/We would like to enter a team of people and enclose a cheque / cash for £

Please include us in (name's) TEAM NAME

Our food choice is as follows:

Number of Sausage & Chips..... Number of Fish & Chips

Number of Pea Fritter & Chips Number of Vegetable Spring Roll & Chips

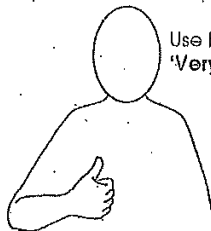


Makaton

We have been learning the following signs this month



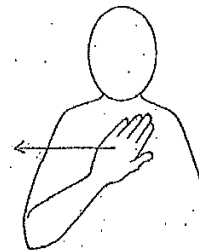
Good (1)



Use both hands for 'Very Good'



No



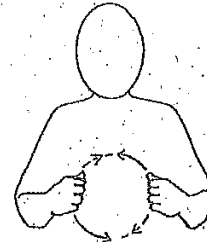
Good (2)



Small downward movement of arm



Car



To Walk

