

**Headteacher: Mrs Sally Dreckmann**

Hawkins Close, Bognor Regis, West Sussex PO21 3LW

Phone & Fax: 01243 262318

office@rosegreeninfant.school

www.rosegreeninfant.school



## NEWSLETTER – March 2020

Dear Parents and Carers,

Although we live in an increasingly diverse community, I always think that it is good for children to know what is beyond their doorstep and so I have recently used links I established in my previous headship to forge a new link, between Rose Green Infant School and a school called Kasimba Primary in Kenya. We are in the early stages of the relationship; they have sent some photographs which I will be sharing with the children, including one of a classroom where they only have a roof - no walls or windows until they can afford to continue with the construction. A link like this is mutually beneficial; we will fundraise for them (the money from the collections at this term's Year 1 concerts will be sent to them) and send them letters, photos and pictures each term and they will write back to us, so we can learn about one another's cultures, school life, weather and food, to name a few examples.

With regards

Mrs Sally Dreckmann

### Fairtrade Fortnight (24<sup>th</sup> February - 6<sup>th</sup> March)

We are still collecting examples of Fairtrade packaging if you would like to bring any in for a display in school.



### World Book Day

Just a reminder that children may come into school in their pyjamas and bring in their favourite bedtime story on Thursday 5<sup>th</sup> March to celebrate world book day.

### Year 1 Grand Designs Project

All Year 1 parents are very welcome to stay on the morning of Wednesday 4<sup>th</sup> March to help the children make their shoebox rooms. Year 1 parents are also invited to join their children for a special assembly at 2.30 pm on Monday 9<sup>th</sup> March where the winners of the best shoebox rooms will be announced.

### Year 1 Concerts

Tickets will be available for these concerts from the class teachers on Monday 16<sup>th</sup> March. There will be a total of 2 tickets available per child. Please note that pre-school children will only be admitted to the 2.15 p.m. performance on Tuesday 31<sup>st</sup> March. Thank you.

### Sport Relief Day - Friday 13<sup>th</sup> March

We would like the children to come dressed either in sporty clothes (or non-school uniform) on Friday 13<sup>th</sup> March and to bring in a small donation towards Sport Relief.



### PTA Quiz Night

It is not too late to book a table at our quiz night on Friday 13<sup>th</sup> March. Entry forms are available from the school office. Please can these be returned as soon as possible as we need to notify the caterer of numbers.

### KS1 Phonics and Reading Workshop

A phonics and reading workshop has been arranged for Year 1 and Year 2 parents on Wednesday 18<sup>th</sup> March at 2.00 pm in the hall.

### PTA Easter Tombola

The PTA have organised an Easter egg tombola after school in the playground on Friday 3<sup>rd</sup> April. Children may come to school in non-uniform if they wish on Monday 30<sup>th</sup> March and bring in an Easter egg donation towards the tombola.



### SATs Testing

During the first half of the Summer Term, all Year 2 children will be taking the end of Key Stage 1 tests. This comprises of two reading papers and two maths papers. Examples of last year's papers can be found at

<https://www.gov.uk/government/collections/national-curriculum-assessments-practice-materials>.

In school we do not tell the children that they are taking these tests and make them part of our everyday work.

### Phonics Testing

The Year 2 children who need to re-take this test, and all the Year 1 children will be taking their Phonics test in the week commencing 8<sup>th</sup> June so it is vital that all the children are in school at this time. Thank you.

### Maths Week: 3<sup>rd</sup> - 7<sup>th</sup> February

Thank you for all the children's lovely entries for the 'Festival of Shape' competition during maths week. The 2D/3D animal shapes were amazing.

These were judged by our Linking Voices who choose the following winners: -

Sunflower Class - Thomas B

Bluebell Class - Betsy

Poppy Class - Evania

Ladybird Class - Caleb

Butterfly Class - Eduardo

Hedgehog Class - Lenny

Oak Class - Roman

Willow Class - Joseph

Sycamore Class - Beau



We also held a non-uniform day on Friday 7<sup>th</sup> February where children came to school dressed in something shape or number themed. We raised £183.10 which we have used to purchase the maths resource 'Numbots' for all the children. More details to follow.



### St Richard's Church, Aldwick

St Richard's Church will be holding a coffee morning on Saturday 4<sup>th</sup> April from 10.30am - 12.30pm in Mosse Hall behind the Church if anyone is interested in going. There will be palm cross making, a raffle and book sale, bring and buy table and hot drinks/home make cakes.

### Makaton Magic

Please see the attached sheet showing the signs the children have been learning during February. Further information on Makaton can be found on the following link



<https://www.bbc.co.uk/cbeebies/joinin/something-special-getting-started-with-makaton>

### Parent Governor Appointment

Following the secret ballot on Friday 14<sup>th</sup> February, we are pleased to welcome Mr Martyn Tilling onto our governing body.

### Arun Hub Enabling Families

Are you a parent facing challenges? Are you worried about a family situation or problem? Would it help to talk it through? Sessions are held on a Tuesday morning at the Bognor Regis Children and Family Centre, 85 Victoria Drive, Bognor Regis. Telephone 01903 276840 for further information and to book an appointment.

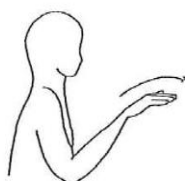
### Music and Movement Club

This fun music club runs on a Thursday after school for one hour, at a cost of only £4.50 per session. **Musical Exploration with IMM** will take your child on a journey of instrumental discovery where they will have the opportunity to explore a variety of instruments and genres of music. In addition to this, foundations of music will be covered through games and activities. There is so much to explore! If your child would like to join in the fun, please contact Inclusive Music and Movement at [imm@inclusivemusicandmovement.com](mailto:imm@inclusivemusicandmovement.com) to book your place.

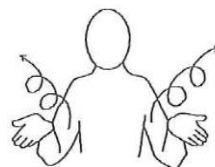


## Makaton

We have been learning the following signs this month



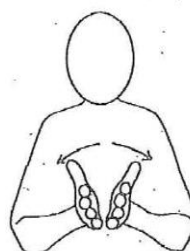
Outside



Play



Book





# the BIG

# WELL-BEING

# event

FREE ENTRY



family fun  
advice & help  
entertainment  
free demos  
**feeling good**  
**keeping healthy**  
**staying well**

**saturday 18 april 2020, 10.30am-3.30pm**  
**at arun leisure centre**

**Felpham Way, Bognor Regis PO22 8ED**

Come and find out what resources and services are available  
to help you achieve and maintain your health and wellbeing –  
over 40 community stalls all under one roof



For more information visit  
[www.freedom-leisure.co.uk/arun](http://www.freedom-leisure.co.uk/arun)



freedomleisure  
where you matter



## Dates for your Diary - more details to follow (New dates in **Red**)

Event	Date	Time
Half term	17 <sup>th</sup> - 21 <sup>st</sup> February	
Fairtrade fortnight	24 <sup>th</sup> February - 6 <sup>th</sup> March	
Creative Week	2 <sup>nd</sup> - 6 <sup>th</sup> March	
Year 1 - 'stay and make' shoebox rooms with your child's class	Wednesday 4 <sup>th</sup> March	8.50 am
World Book Day	Thursday 5 <sup>th</sup> March	
Presentation to the winners of the best Year 1 shoebox room	Monday 9 <sup>th</sup> March	2.30 pm
'The Big Sing' at the Arena	Thursday 12 <sup>th</sup> March	9.30 am
PTA Quiz Night	Friday 13 <sup>th</sup> March	7.00 pm
Sport Relief	Friday 13 <sup>th</sup> March	All day
Phonics and reading workshop for Year 1 & 2 parents	Wednesday 18 <sup>th</sup> March	2.00 pm
Year 1 Cake Sale	Friday 20 <sup>th</sup> March	3.00 pm
Dance House Festival at the Alexandra Theatre, Bognor	Tuesday 24 <sup>th</sup> March	6.00 pm (rehearsal in afternoon)
Reception visiting Staunton Country Park	Thursday 26 <sup>th</sup> March	
Non-uniform day and bring in a Easter egg donation for PTA tombola	Monday 30 <sup>th</sup> March	All day
Year 1 concert for parents	Tuesday 31 <sup>st</sup> March	2:15 pm
Year 1 concert for parents (no babies or pre-school children)	Wednesday 1 <sup>st</sup> April	9:15 am
Working with Others Spring Event	Thursday 2 <sup>nd</sup> April	am
PTA Easter tombola	Friday 3 <sup>rd</sup> April	3.00 pm
Easter holidays	6 <sup>th</sup> - 17 <sup>th</sup> April	
Start of Summer Term	Monday 20 <sup>th</sup> April	
PTA Bunny Bounce	Tuesday 21 <sup>st</sup> April	am
Year 2 Infant Agility at the Arena	Friday 24 <sup>th</sup> April	9.30 - 11.30 am
Year 1 Trip to Amberley Museum	Wednesday 29 <sup>th</sup> April	
Year 1 Class assemblies for parents	Thursday 7 <sup>th</sup> May - Butterfly Thursday 14 <sup>th</sup> May - Hedgehog Thursday 21 <sup>st</sup> May - Ladybird	2.30 pm 2.30 pm 2.30 pm
BANK HOLIDAY	Friday 8 <sup>th</sup> May	
Class photos	Wednesday 13 <sup>th</sup> May	All morning
Walk to School Week	18 <sup>th</sup> - 22 <sup>nd</sup> May	
Half term	25 <sup>th</sup> - 29 <sup>th</sup> May	
INSET Day	Monday 1 <sup>st</sup> June	
New Parents Meeting	Tuesday 9 <sup>th</sup> June	7.00 pm
Phonics testing week	8 <sup>th</sup> - 12 <sup>th</sup> June	
Year 1 Summer Sports at the Arena	Friday 12 <sup>th</sup> June	9.00 - 11.30 am
School Grounds week	15 <sup>th</sup> - 19 <sup>th</sup> June	
Reception Celebration Assembly for parents	Thursday 11 <sup>th</sup> June	2:15 pm
Reception Celebration Assembly for parents (no babies or pre-school children)	Friday 12 <sup>th</sup> June	9:15 am
PTA Summer Fair	Friday 12 <sup>th</sup> June	5.00 - 7.00 pm

Reception Sports morning and picnic lunch	Tuesday 16 <sup>th</sup> June	10.30 - 1.00 pm
Year 1 Sports morning and picnic lunch	Wednesday 17 <sup>th</sup> June	10.30 - 1.00 pm
Year 2 Sports morning and picnic lunch	Thursday 18 <sup>th</sup> June	10.30 - 1.00 pm
Reception Huff & Puff at the Arena	Monday 22 <sup>nd</sup> June	9.15 - 11.15 am
National Sports Week	22 <sup>nd</sup> - 26 <sup>th</sup> June	
Reserve Reception Sports morning & picnic lunch	Tuesday 23 <sup>rd</sup> June	10.30 - 1.00 pm
Reserve Year 1 Sports morning & picnic lunch	Wednesday 24 <sup>th</sup> June	10.30 - 1.00 pm
Reserve Year 2 Sports morning & picnic lunch	Thursday 25 <sup>th</sup> June	10.30 - 1.00 pm
Teddy Bear's Picnic	Monday 29 <sup>th</sup> June	
Transition Day	Wednesday 1 <sup>st</sup> July	
Thank you Assembly KS1 for invited parent helpers	Thursday 2 <sup>nd</sup> July	9:10 am
Thank you Assembly Reception for invited parent helpers	Thursday 2 <sup>nd</sup> July	2:30 pm
Story Time for new Reception	Tuesday 7 <sup>th</sup> July	2.15 - 2.45 pm
Year Two Concert for parents	Wednesday 8 <sup>th</sup> July	2.15 - 2.55 pm
Year Two Concert for parents (no babies or pre-school children)	Thursday 9 <sup>th</sup> July	9.10 - 9.50 am
Reports to be sent home	Friday 10 <sup>th</sup> July	
Outdoor Play Day	Tuesday 14 <sup>th</sup> July	All day
Open afternoon	Wednesday 15 <sup>th</sup> July	2:15 pm
Year 2 Leavers Disco	TBC	
Last day of term	Friday 17 <sup>th</sup> July	
Inset Day	Monday 20 <sup>th</sup> July	
Start of Autumn Term	Monday 7 <sup>th</sup> September (Thursday 3 <sup>rd</sup> & Friday 4 <sup>th</sup> September are Inset Days)	