

Headteacher: Mrs Sally Dreckmann

Hawkins Close, Bognor Regis, West Sussex PO21 3LW

Phone & Fax: 01243 262318

office@rosegreeninfant.school

www.rosegreeninfant.school

what3words location: riverbank.flannel.crumbles



NEWSLETTER - NOVEMBER 2023

Dear Parents and Carers,

I hope that you all had an enjoyable half term week with your children. The next half term is already looking busy, with lots of events going on in the run up to Christmas, so please keep an eye out for ParentMail messages to keep you up to date.

Please can I remind you that nobody should be parking on the (newly painted) yellow zigzag lines outside the school. The lines are there to ensure that there is clear visibility and it is safe to walk up to the school. By parking on the lines, drivers are compromising the safety of the children. I have also had complaints again from residents and some parents, who have had parents and carers from the school parking dangerously or inconsiderately in the immediate area, including right on the junction into Hawkins Close. As a school community, we need to have positive relationships with our neighbours and keep everyone safe, so please show consideration when parking near the school. Finally, please can I remind you that you should not be driving onto the school site to drop off or pick up unless you have had permission to use our disabled spaces.

With regards

Mrs Sally Dreckmann
Headteacher

Dates for your Diary



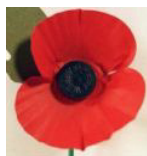
Please see the attached sheet of dates for your diary. Any new dates added since the last newsletter are in **red**.

Science Week

During Science week (13th - 17th November), the children may bring in a simple experiment to demonstrate to the rest of their class. We look forward to seeing some exciting work.



Royal British Legion Poppy Appeal



This year we have many lovely things for sale for the Poppy Appeal. We have snap rulers, wristbands, reflectors and of course poppies! From now until Remembrance Day, we will be selling these after

school from the grassed turning circle if you would like to make a donation.

BBC Children in Need - Friday 17th November

We will be supporting Children in Need again this year - all children are very welcome to come to school in fancy dress, or just non-uniform.



Donations of £1.00 would be really appreciated for this very worthwhile charity. Thank you!

Harvest Festival

It is not too late for you to bring in a food donation to support the Bognor Regis Foodbank (many thanks to those families who have already sent in a donation). We would welcome any 'cupboard items' such as tins, jars, packets etc. Please can these be handed to either the class teacher or school office by Friday 3rd November at the latest.



Christmas Concerts



Tickets for all concerts will be available from class teachers on Monday 20th November - you must bring your ticket with you to the concert. There will be two tickets available per family

for all the concerts taking place.

We would appreciate it if you could try not to bring babies or toddlers along, but if you have to, they can come to some of the concerts (see diary notes below). Can we please ask that you remove them from the hall if they are noisy or cause a distraction to the children - the adults work so hard to help them to learn the songs and their lines and they can be so easily distracted. Thank you ☺

We will be collecting for a local charity at the end of each concert. If anyone can spare some loose change, that will be very much appreciated. The children will be voting in their classes on which charity we will be supporting this year.

Christmas Dinner

A special Christmas dinner will be served by Chartwells on Wednesday 13th December.



Mains: Roast Turkey or Quorn fillet
with roast potatoes, carrots, peas,
stuffing, mini sausage and gravy

Desserts: Snowy Cupcake or choice of fruit
Milk, water or fruit squash

If your child usually has a packed lunch on a Wednesday, but would like to have the free Christmas Dinner, you will need to order on ParentPay by 20th November. If you do not currently have an account with ParentPay, please contact the school office.

PTA News

The PTA will be holding a children's table top sale in the school hall on Saturday 18th November between 9.00 - 11.00 am. If anyone is interested in having a table for £10.00, please book it via the school office. We hope you will be able to join us on the 18th and grab a bargain! Refreshments and bacon sandwiches will be on sale.

The PTA have started to plan for our Christmas Fair, which will be on Friday 1st December between 5.00 - 7.00 pm. We hope you and your family will be able to join us at this popular event. Your child will shortly be coming home with a book of raffle tickets; this gives you a chance to win some great prizes and help raise important funds towards the next school projects. The tickets are priced at £1.00 each or £5.00 per book; if you have any tickets you don't require or would like additional tickets to sell to friends and family, please call in to the school office.



We will be holding our usual non-uniform day on Wednesday 22nd November for which we ask you to bring in a donation towards the Fair. Please can each year group bring in the following:-

Reception classes - sweets/chocolates

Year 1 classes - children tombola items (new toys/toiletries/games)

Year 2 classes - adult tombola items (alcohol/toiletries/gift sets).

In addition, if you are associated to, or know of any companies that could sponsor a stall or donate a raffle prize, we would welcome any assistance; there are some official request letters available from the office if required. Likewise, if anyone is available to help set-up/run a stall/clear up afterwards, even if only for an hour, it would be a huge help!

Thank you in advance for all your help and support in these events to provide additional funds needed for new SEND software and play equipment for all year groups.

KS1 Enrichment

As part of our ongoing work to enhance and improve our curriculum, we have introduced enrichment time in KS1 on a Friday afternoon. For Y1, this is an afternoon within their own classroom, where they can choose from a range of learning opportunities. In Y2, the children have chosen one of the 'clubs' on offer for part of the afternoon.

Linking Voices

At Rose Green Infant School, we believe all the children in the whole school should be part of our School Council and every child then has the opportunity to have a voice.



For the benefit of our new parents, we regularly hold 'Linking Voice' meetings. We have one representative from each class who is the link between the children in their class and Mrs Sugden, the staff and governors. After each meeting with Mrs Sugden, the Linking Voice shares what was discussed in the meeting with their class in a Class Council meeting. At the next Linking Voice meeting, the Linking Voice will then talk to Mrs Sugden and the rest of the Linking Voices about what their class has said in response to the questions for discussion. The idea is that all of the children will have an opportunity to put forward their own ideas and be more part of decision making.

The representative from each class will wear a special badge to show others that they are the Linking Voices.

St Richard's Church, Aldwick - Christmas Tree Festival

We will be decorating a Christmas tree to exhibit at the festival. Carols and prize giving will be on Sunday 10th December at 4.00 pm if any family wish to join us at the Church.

Makaton Magic

Please see the attached sheet showing the signs the children have been learning during September and October.



A Plea

Please, please could we ask that:

- If your child is having packed lunches, as a healthy school we ask that you do not put any sweets or bars of chocolate such as mars bars in lunchboxes. We also ask that you do not put any nut products i.e. peanut butter or Nutella sandwiches in lunchboxes as we have a few children in school with a severe allergy to nuts. Also, if your child brings a yoghurt for lunch, please can you remember to provide them with a spoon.
- For health and safety, please can your child avoid wearing hooped earrings to school. All earrings need to be covered with tape during PE (please provide your child with a reel of micro pore tape that can be kept in their drawer). Thank you.
- Please could we ask that children do not bring large/bulky rucksacks into school. We are finding them too large to fit on the children's pegs and, for the younger children in Reception, they are finding them difficult to manage. All the children need to bring into school is their bookbag, water bottle and lunch bag (if they do not have a hot dinner). Thank you.

Dates for your Diary - more details to follow (New dates in **Red**)

Event	Date	Time
Half term	23 rd - 27 th October	
Inset Day	Monday 30 th October	
Parent consultations	w/c 30 th October	
Flu vaccinations for Reception, Year 1 & 2	Monday 6 th November	
Junior School Open Evening (for Year 2 parents)	Wednesday 8 th November	5.00 pm
Science Week	w/c 13 th November	
Children in Need (non-uniform day)	Friday 17 th November	all day
PTA Table Top Sale	Saturday 18 th November	9.00 - 11.00 am
Non-uniform day (bring in a donation towards the Christmas Fair)	Wednesday 22 nd November	
Rainbow Theatre Production for Year 2	Thursday 23 rd November	pm
PTA Christmas Fair	Friday 1 st December	5.00 -7.00 pm
Reception Christmas Nativity for parents	Wednesday 6 th December	2.15 pm
Reception Christmas Nativity for parents (no babies or pre-school children)	Thursday 7 th December	9.00 am
Henry Adams prize giving assembly (more details to follow)	Thursday 7 th December	2.30 pm
PTA Christmas Shop	Friday 8 th December	
Year 1 Christmas Concert for parents	Tuesday 12 th December	2.15 pm
Year 1 Christmas Concert for parents (no babies or pre-school children)	Wednesday 13 th December	9.00 am
Welcome Wednesday	Wednesday 13 th December	2.30 pm
Christmas Dinner	Wednesday 13 th December	
Save the Children Fund Christmas Jumper Day	Wednesday 13 th December	
Year 2 Christmas Songs for parents	Thursday 14 th December	2.15 pm
Year 2 Christmas Songs for parents (no babies or pre-school children)	Friday 15 th December	9.00 am
Christmas holidays	18 th December - 1 st January	
Inset Day	Tuesday 2 nd January	
Start of Spring Term	Wednesday 3 rd January	
Parent Consultation Week	w/c 5 th February and 19 th February (more details to follow)	
Welcome Wednesday	Wednesday 7 th February	2.30 pm

Inset Day	Friday 9 th February	
Half Term	12 th - 16 th February	
Maths Week	w/c 11 th March	
Welcome Wednesday	Wednesday 27 th March	2.30 pm
Easter holidays	29 th March - 12 th April	
Start of Summer Term	Monday 15 th April	
Class Photos (re-arranged date from 15 th May)	Thursday 25 th April	am
Creative Week	w/c 29 th April	
Bank Holiday	Monday 6 th May	
Welcome Wednesday	Wednesday 15 th May	2.30 pm
Walk to School Week	w/c 20 th May	
Reception Sports Morning	Monday 20 th May followed by picnic lunch	10.30 am
Year 2 Sports Morning	Wednesday 22 nd May followed by picnic lunch	10.45 am
Year 1 Sports Morning	Thursday 23 rd May followed by picnic lunch	10.45 am
Half Term	27 th - 31 st May	
Inset Day	Monday 3 rd June	
Phonics Testing Week	w/c 10 th June	
Sports Week	w/c 17 th June	
Reserve Reception Sports Morning	Monday 24 th June followed by picnic lunch	10.30 am
Reserve Year 1 Sports Morning	Thursday 27 th June followed by picnic lunch	10.45 am
Reserve Year 2 Sports Morning	Friday 28 th June followed by picnic lunch	10.45 am
Transition Day	Wednesday 3 rd July	All day
Summer Fair	tbc	
School Reports to go home	Friday 5 th July	
Welcome Wednesday/Open Afternoon	Wednesday 10 th July	2.15 - 3.15 pm
Year 2 Concert for parents	Wednesday 17 th July	2.00 pm
Year 2 Concert for parents (no babies or pre-school children)	Thursday 18 th July	9.00 am
Year 2 Leaver's Disco	Thursday 18 th July	4.00 - 5.15 pm
Outside Playday	Friday 19 th July	All day
Year 2 Leaver's Assembly (for parents)	Tuesday 23 rd July	9.00 am
Last day of Term	Tuesday 23 rd July	

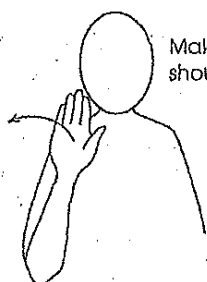


Makaton

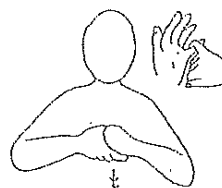
We have been learning the following signs this month



Hello



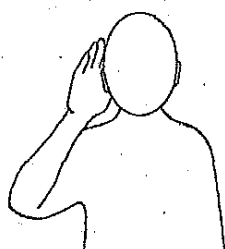
Make sign at shoulder height



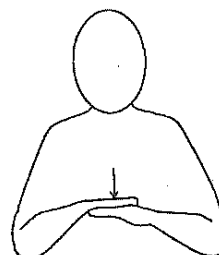
Friends



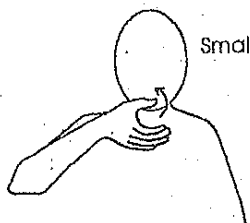
To Listen



To Sit



A Drink



Small movement



Biscuit



Tap twice

NEW! West Sussex Mind Parenting Peer Support Group 'Circles' near you!

If you are you a parent or care giver to a child or young person and supporting them with their mental health, you may feel alone at times and need some support. Did you know peer support can help increase confidence and can help you learn new skills like coping with challenges? We have started Peer Support Group 'Circles' across the county, where you can meet the team and other parents, all with lived experience.

The Parents Service at West Sussex Mind has lots more to offer:

We hold regular Peer Support Groups both during the day (both in person and on-line) and evening (on-line). We have a monthly 'Expert by Experience' Guest Speaker join us for one of the evening sessions, this year so far we have covered topics such as Self-harm, OCD, Social Anxiety and How to manage aggressive behaviours. These sessions are great as you get to hear more about the subject and a chance to ask any questions relating to your situation.

Another great aspect of the service is the opportunity to have some 1:1 sessions with a Peer Support Worker (again who has lived and professional experience).

These are in blocks of three and can be delivered at a time convenient for you.

We have a closed Facebook group for sharing information and to give parents and carers a platform to ask any questions confidentially.

There are monthly newsletters and access to training, e-learning and webinars (on the West Sussex Mind website).



Please find us at:

ADUR (Fishergate)

The Neighbourhood Gateway Hub, West Street (Gardner Road Entrance), BN41 1PR

- Monday 06.11.23
- Monday 04.12.23

ARUN (Bognor Regis)

Arun West Family Hub, Laburnam Grove, Bognor Regis PO22 9HT

- Monday 11.12.23

NORTH (Horsham)

Upper Floor Hall, Blackbridge Community Centre, Three Acres, Horsham, RH12 1RS

- Monday 13.11.23

WEST (Midhurst)

The Rowan Room, The Grange, Bepton Road, Midhurst GU29 9HD

- Wednesday 13.12.23

WORTHING (Durrington)

Ashdown Centre, Birkdale Road, BN13 2QY

- Tuesday 31.10.23
- Tuesday 28.11.23

If you would like to know more, please contact us via our Help Point and state you would like a parenting referral.

Call our Help Point

**Monday to Friday, 10am until 4pm on 0300 303 5652
or email helppoint@westsussexmind.org**

West Sussex  Mind

DEDICATED SCHOOLS TEAM



Hello!

My name is Chloe. I just wanted to introduce myself. I am a Family Support Worker for the Dedicated Schools Team in the Arun area and I'm the link worker for Rose Green Infant School.

Our aim as the Dedicated Schools Team is to support schools in supporting their families by providing information, advice, and guidance. We also provide direct work with children, young people, and parents/carers. This can be around behaviour, mental health, attendance and school worries, relationship, and friendship advice, as well as many other things.

If you have any worries or concerns, we are here to help! If you would like to have a chat with me, I will be attending Welcome Wednesdays on:

7 February 2024

27 March 2024

15 May 2024

10 July 2024.

In addition to these dates, I will be in school all day on Monday 4 December. If you wish to see me to discuss some support, please book an appointment through the school office.

Best wishes,

Chloe

Chloe Watkins



Maths for parents & carers

Increase your confidence with numbers

Numeracy is a valuable life skill which can improve your everyday life, from understanding household finances, helping children with homework, or something specific to your line of work. Improved numeracy can also help with finding better work.

Receive a
£40*
SHOPPING
VOUCHER

Reserve your free place www.twineemployment.com/wsmultiply

Boost your confidence

'You and Me - 1,2,3' is a free face-to-face course which runs for one day per week across eight weeks. It introduces parents and children to how maths is taught at school and aims to improve confidence in maths at early key stage 1, and helps parents/carers develop confidence in helping children with homework. Parents considering applying to teaching or volunteering roles will also gain valuable insight and skills to enhance CV's and applications.

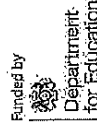
What's in it for me?

The course will increase your confidence and you will receive a £40 shopping voucher upon successful attendance and completion of the course.

Everyone who completes the course has the opportunity for a one-to-one session to discuss further support and guidance on how to upskill in numeracy. Participants also have access to the Twin local jobs directory where they can access guaranteed interviews with our partner employers, or gain support to apply for employment.

Eligibility:

- You must be 19+ years
- West Sussex
- Do not already have a Level 2 math qualification at A*- C (9+ - 4) grade



Scan here

Find out more at www.twineemployment.com/wsmultiply

*All participants receive a £40 shopping voucher upon successful attendance and completion of the course