

**Headteacher: Mrs Sally Dreckmann**

Hawkins Close, Bognor Regis, West Sussex PO21 3LW

Phone & Fax: 01243 262318

office@rosegreeninfant.school

www.rosegreeninfant.school



## NEWSLETTER - December 2021

Dear Parents and Carers,

I cannot quite believe that we are almost at the end of term - that flew by! As is often true this time of the year, many of the children have been off school unwell. Could I please remind you all that you should notify us before 9.00 am on the first day of absence - there is an answerphone if you are ringing out of school hours or you can use Parent Mail. If the absence is extended, we would appreciate it if you could keep us updated. If you don't contact us, we have to ring you to ascertain where your child is, so please do ring back if we leave a message. If we cannot account for a child's whereabouts that is obviously a concern, but if it is for an extended period, this becomes a safeguarding issue and we may have to make a referral to the Multi-Agency Safeguarding Hub if we can't get in contact with you after a few days.

On behalf of the Governors and the staff, we wish you all a Happy Christmas and New Year when it comes, and look forward to continuing to work together in 2022.

With regards

Mrs Sally Dreckmann  
Headteacher

### So Many "Thank yous"!!!

#### BBC Children in Need

Many thanks to those families who donated on-line this year. We raised £100 for Children in Need.



#### Science Week

Our science week certainly went with a bang! We are very grateful to everyone who provided experiments from home. The children found it

fascinating. Please do look on our website to see what the children got up to.



#### Harvest Festival

We were overwhelmed by the amount of donations given by you. These were collected by UK Harvest and sent to those families in the community most in need. We collected an amazing 300 kgs of food which I am reliably informed is equivalent to the weight of three baby elephants! We would also like to thank Farndell Estates Agents for donating a number of food items.



### Save the Children

We are supporting the "Save the Children Fund" Christmas Jumper Day on Friday 10<sup>th</sup> December.

Children may come to school in a festive jumper instead of their school sweatshirt if they wish and bring in a £1 donation for this charity.



### Flu Vaccinations

If your child missed the flu vaccination last month and you wish to book a vaccination, please apply online by visiting

[www.susseximmunisations.co.uk/Forms/Flu](http://www.susseximmunisations.co.uk/Forms/Flu)

You will need to enter the school code which is SX125928. Please speak to Mrs Porter in the office if you are having any difficulties.

### Uniform in School

As the weather is getting colder, children may wear a hoodie or gilet over their school jumper if they are feeling cold in class. We are trying to keep the classrooms as ventilated as possible at the moment due to the pandemic and we would not wish the children to feel cold, but we do balance that with comfort, so please don't think we are all sitting in sub-zero temperatures all day!

### Christmas Concerts

We hope by now you will have got your ticket to see your child's Christmas concert. We are still planning for these to go ahead **but we may have to cancel the concerts at short notice if we see an increase in the number of covid cases in our school or if we are directed to do so by the Government.** We understand this may be disappointing for people but please be assured this will only happen as a last resort, in response to our ongoing risk assessment process and direction from the Local Authority and DfE.

In accordance with DfE guidance, please could we ask that all visitors to the school hall wear face coverings for the duration of the performance, unless they are exempt. Please could we also ask you to bring any loose change to the Christmas concerts as we will be collecting for a local charity (the children will shortly be voting for one in class).

### PTA News

The children have been very busy making either Christmas calendars or tree decorations to help raise funds for the school. These are available to purchase at £2.00 (for Years 1 & 2) and £1.50 (for Reception). Please could you send your money in an envelope clearly marked 'Christmas decorations' with your child's name and class. They will then be sent home in your child's book bag before the end of term.



The PTA will be selling Raffle tickets again this year. Your child will shortly come home with a raffle ticket in their bookbag. Please can you fill out how many tickets you would like and return it with the correct money in a named envelope to the class teacher. The tickets cost £1.00 each or five for £4.00. The PTA have some lovely prizes on offer and winners will be announced during the last week of term.

Our movie night sessions have also begun and have proven to be a big hit with the children, especially the drink and popcorn! If you have not already done so, please can you bring in your £3.00 donation so that we can begin to tally up our totals.



Just a reminder that on Friday 3<sup>rd</sup> December, the children can come to school in non-uniform and bring in a small gift donation towards our Christmas shop i.e. smellies, gift sets, confectionary. Please can we ask that the items are new and unused.

The Christmas shop will be held in school on Thursday 16<sup>th</sup> December. Your child will be taken into the shop by their class teacher where



they can 'purchase' one gift for a friend or family member. Members of the PTA will then wrap the present for them to bring home. Please can your child bring in a suggested £1.00 donation on this day. Thank you. Any donations of wrapping paper or sellotape would also be appreciated.

We would like to say a very big 'thank you' to Pagham Co-op for donating just under £2,000 towards the school funds. Jude and Isaac from Sunflower Class kindly accepted the cheques on behalf of the school.

### Holiday and Leave of Absence Requests

Just a reminder that requests for absence from learning will only be authorised in exceptional circumstances. We understand that people are concerned about covid in school but we cannot authorise absence from school for this reason.

Absence request forms are available from the school office.

### Makaton Magic

Please see the attached sheet showing the signs the children have been learning during November.



### TERM DATES / INSET DAYS for your information

#### Remaining Inset Dates (School closed for staff training days)

Tuesday 4<sup>th</sup> January 2022

Monday 6<sup>th</sup> June 2022

#### **2021/2022**

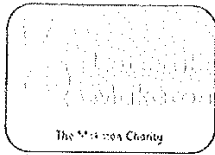
Autumn term	<ul style="list-style-type: none"> <li>Starts: Monday 6 September</li> <li>Half term: Monday 25 to Friday 29 October</li> <li>Ends: Friday 17 December</li> </ul>
Christmas break	<ul style="list-style-type: none"> <li>Monday 20 December to Tuesday 4 January</li> </ul>
Spring term	<ul style="list-style-type: none"> <li>Starts: Wednesday 5 January (Monday 4 is an Inset Day)</li> <li>Half term: Monday 21 February to Friday 25 February</li> <li>Ends: Friday 8 April</li> </ul>
Easter break	<ul style="list-style-type: none"> <li>Monday 11 April to Friday 22 April</li> </ul>
Summer term	<ul style="list-style-type: none"> <li>Starts: Monday 25 April</li> <li>Half term: Monday 30 May to Friday 3 June</li> <li>Ends: Thursday 21 July</li> </ul>

### Dates for your Diary - more details to follow (New dates in **Red**)

Event	Date	Time
Oak Class Movie Night	Thursday 2 <sup>nd</sup> December	3.00 - 4.45 pm
Reception Classes walking to post their Father Christmas letters	Friday 3 <sup>rd</sup> December	
PTA Non-uniform day (to bring in a donation for the Christmas Shop)	Friday 3 <sup>rd</sup> December	
Butterfly / Ladybird / Willow / Sycamore Classes Movie Nights	Monday 6 <sup>th</sup> December	3.00 - 4.45 pm
Reception Christmas Concert	Tuesday 7 <sup>th</sup> December	9.15 am
Reception Christmas Concert (no babies or preschool children please)	Wednesday 8 <sup>th</sup> December	9.15 am
Year 2 Trip to the Alexandra Theatre	Wednesday 8 <sup>th</sup> December	12.30 pm
Year 2 Christmas Concert	Thursday 9 <sup>th</sup> December	9.15 am
Reception Christmas Concert (no babies or preschool children please)	Thursday 9 <sup>th</sup> December	2.15 pm
Save the Children Fund Christmas Jumper Day	Friday 10 <sup>th</sup> December	
Year 2 Christmas Concert (no babies or preschool children please)	Friday 10 <sup>th</sup> December	9.15 am

preschool children please)		
Year 2 Christmas Concert (no babies or preschool children please)	Friday 10 <sup>th</sup> December	2.15 pm
Year 1 Christmas Concert	Tuesday 14 <sup>th</sup> December	2.15 pm
School Christmas Lunch	Wednesday 15 <sup>th</sup> December	
Year 1 Christmas Concert (no babies or preschool children please)	Wednesday 15 <sup>th</sup> December	9.15 am
Year 1 Christmas Concert (no babies or preschool children please)	Wednesday 15 <sup>th</sup> December	2.15 pm
PTA Christmas Shop	Thursday 16 <sup>th</sup> December	
Christmas holidays	20 <sup>th</sup> December - 3 <sup>rd</sup> January	
Inset Day	Tuesday 4 <sup>th</sup> January	
Start of Spring Term for children	Wednesday 5 <sup>th</sup> January	

We will update the diary soon - new dates for the Spring term will be in the January newsletter.

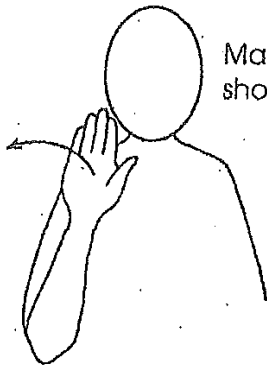


## Makaton

We have been learning the following signs this month



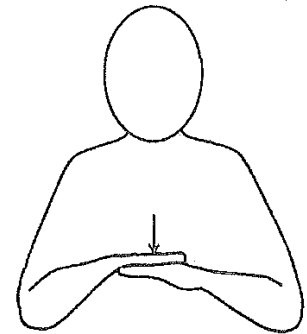
Hello



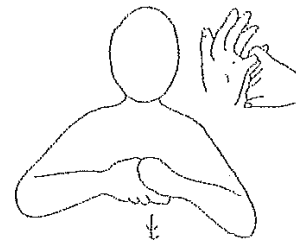
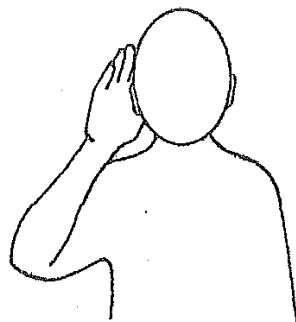
Make sign at shoulder height.



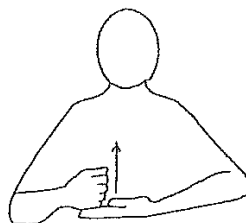
To Sit



To Listen



Friends



Help