

Headteacher: Mrs Sally Dreckmann

Hawkins Close, Bognor Regis, West Sussex PO21 3LW

Phone & Fax: 01243 262318

office@rosegreeninfant.school

www.rosegreeninfant.school

what3words location: riverbank.flannel.crumbles



NEWSLETTER - December 2023

Dear Parents and Carers,

I cannot quite believe that we are almost at the end of term - that flew by! As is often true this time of the year, many of the children have been off school unwell. Could I please remind you all that you should notify us before 8.45 am on the first day of absence - there is an answerphone if you are ringing out of school hours or you can use Parent Mail. If the absence is extended, we would appreciate it if you could keep us updated. Please can I remind you that children will need to be kept off school for 48 hours following any sickness or diahorrea.

On behalf of the Governors and the staff, we wish you all a Happy Christmas and New Year when it comes, and look forward to continuing to work together in 2024.

With regards

Mrs Sally Dreckmann
Headteacher

So Many "Thank yous"!!!

BBC Children in Need

Many thanks to those families who donated towards this worthwhile charity. We raised an amazing £262.95 for Children in Need this year.



Harvest Festival

We have received a lovely letter from Jacque Long, Project Manager at the Bognor Regis Foodbank, thanking us for our generous donation of 108 kg worth of food towards their Harvest Appeal.

A Huge THANK YOU to Barfoots of Botley

The reception children started off the second part of the Autumn term by going 'Potty about Pumpkins'. We were thrilled to receive lots of medium and large pumpkins, kindly donated by Kimberley Barfoot-Brace, of the local Barfoots farm. The children used the pumpkins in almost every area of our Early Years curriculum including literacy, maths, physical development, expressive art and design and understanding the world.



We also wanted the children to gain an understanding of farm to fork so the children investigated the seeds, talked about how seeds can grow, helped to cut and prepare the pumpkins and seeds for roasting and then enjoyed tasting them. They even got to share them with the rest of the school.

What a fabulous celebration of all things pumpkin!

SEND Area

As you may know, we are currently renovating some of the Early Years area to become a Special Needs and Disabilities outside learning space. We would like to say a big thank you to Mr Martyn Jackson for all his hard work in removing a load of adhesive from one of the outside walls. Students from the University of Chichester will be back in March to continue with the renovation.

Christmas Fair

We would like to say a big thank you to all those who came and supported our Christmas Fair last Friday. The majority of the stalls are made up of donated items and I know at times it seems like we are constantly asking for things, but it does mean that most of what we make on the night is profit and can go directly towards school projects to benefit the children. So, thank you for the tombola gifts, the bottles, the sweets, the toys and cakes and anything else you were kind enough to donate.



A lot of work goes into organising and running the Fair and we couldn't do it without all the helpers we get both in the run up to the event and on the night manning the stalls. A huge thank you to the team of staff, students, parents and other relatives for all the time they gave. In particular, a big thank you to Mel, Shereen, Katherine and Kristina and their band of helpers from the PTA for making the event such a success. We would also like to thank Mr Chisnell for his special "appearance" on the night!



We will let you know in due course how much has been raised. Early estimates are just over £3,000!

Christmas Shop

Just a reminder that we have our annual Christmas shop for the children on Friday 8th December. Your child will be taken into the shop by their class teacher where they can 'purchase' a gift for a friend or family member.

Members of the PTA will then wrap the present for them to bring home. Please can your child bring in a suggested £1.00 donation on this day. Thank you.



Visit to Rose Green

The children in Reception had a lovely time last Tuesday walking to post their letters to Father Christmas. Our thanks to the Reception parents who helped with this trip.

Science Week

Our science week certainly went with a bang! We are very grateful to everyone who provided experiments from home. The children found it fascinating. Please look on our website to see what the children got up to!

Save the Children

We are supporting the "Save the Children Fund" Christmas Jumper Day on Wednesday 13th December. Children may come to school in a festive jumper instead of their school sweatshirt if they wish and bring in a £1 donation for this charity. Please can they still wear their normal school trousers and skirts.



Christmas Concerts

The Linking Voices have discussed which charities we should collect for this year. They've decided they would like the money to go to Mount Noddy Animal Centre who provide care and assistance to hundreds of dogs and cats in the local area, and to the local branch of Family Support Work, who are an organisation who provide emotional and practical support to families in need. Please try and remember some small change when you come to the Christmas Concerts, as we will be collecting donations for these charities. Thank you.

Linking Voices

Our linking voices for this term are:-

Oak Class - Charlie
Willow Class - Florence
Sycamore Class - Isla
Ladybird Class - Charlie



Hedgehog Class - Margot
 Butterfly Class - Idris
 Buttercup Class - Alfie
 Bluebell Class - Miley
 Poppy Class - Eva

This week we had our first 'Linking Voice' meeting where we discussed what charities to support this year and how we can make our school even better!

School Christmas Post Box

The school's Christmas Post Box is now in the library if your child would like to post their Christmas cards. Could you please make sure that the cards are addressed using the child's name and class clearly on the front of the envelope. The Year 2 classes will be sorting the cards and delivering them to the correct classes. Please could we ask that you do not include chocolate or sweets in Christmas cards.



Before/After School Clubs

Just a reminder that this week is the last week for after school clubs. Further information on the clubs we will be running in the New Year will be circulated shortly.

PE Kit in School

As the weather is turning colder, please can you ensure that your child has a full PE kit in school including a warm jumper and joggers as they still go outside whenever possible. Thank you.

Holiday and Leave of Absence Requests

Just a reminder that requests for absence from learning will only be authorised in

exceptional circumstances. Absence request forms are available from the school office.

Makaton Magic

Please see the attached sheet showing the signs the children have been learning during November.



TERM DATES / INSET DAYS for your information

Remaining Inset Dates (School closed for staff training days):-

Tuesday 2nd January 2024
 Friday 9th February 2024
 Monday 3rd June 2024

2023/2024

Autumn term	<ul style="list-style-type: none"> Starts: Monday 4 September Half term: Monday 23 to Friday 27 October Ends: Friday 15 December
Christmas break	<ul style="list-style-type: none"> Monday 18 December to Tuesday 2 January
Spring term	<ul style="list-style-type: none"> Starts: Wednesday 3 January (Tuesday 2 is an Inset Day) Half term: Monday 12 February to Friday 16 February Ends: Thursday 28 March
Easter break	<ul style="list-style-type: none"> Friday 29 March to Friday 12 April
Summer term	<ul style="list-style-type: none"> Starts: Monday 15 April Half term: Monday 27 May to Friday 31 May Ends: Tuesday 23 July

Dates for your Diary - more details to follow (New dates in **Red**)

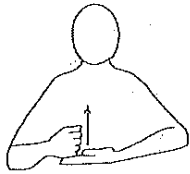
Event	Date	Time
Henry Adams prize giving assembly	Thursday 7 th December	
PTA Christmas Shop	Friday 8 th December	
Carols and prize giving re Christmas Tree Festival at St Richard's Church	Sunday 10 th December	4.00 pm
Year 1 Christmas Concert for parents	Tuesday 12 th December	2.15 pm
Year 1 Christmas Concert for parents (no babies or pre-school children)	Wednesday 13 th December	9.00 am
Welcome Wednesday	Wednesday 13 th December	2.30 pm
Christmas Dinner	Wednesday 13 th December	

Save the Children Fund Christmas Jumper Day	Wednesday 13 th December	
Year 2 Christmas Songs for parents	Thursday 14 th December	2.15 pm
Year 2 Christmas Songs for parents (no babies or pre-school children)	Friday 15 th December	9.00 am
Christmas holidays	18 th December - 1 st January	
Inset Day	Tuesday 2 nd January	
Start of Spring Term	Wednesday 3 rd January	
Parent Consultation Week	w/c 5 th February and 19 th February (more details to follow)	
Welcome Wednesday	Wednesday 7 th February	2.30 pm
Inset Day	Friday 9 th February	
Half Term	12 th - 16 th February	
Maths Week	w/c 11 th March	
Book Fair	Monday 4 th March	3pm
Welcome Wednesday	Wednesday 27 th March	2.30 pm
Easter holidays	29 th March - 12 th April	
Start of Summer Term	Monday 15 th April	
Class Photos (re-arranged date from 15 th May)	Thursday 25 th April	am
Creative Week	w/c 29 th April	
Bank Holiday	Monday 6 th May	
Welcome Wednesday	Wednesday 15 th May	2.30 pm
Walk to School Week	w/c 20 th May	
Reception Sports Morning	Monday 20 th May followed by picnic lunch	10.30 am
Year 2 Sports Morning	Wednesday 22 nd May followed by picnic lunch	10.45 am
Year 1 Sports Morning	Thursday 23 rd May followed by picnic lunch	10.45 am
Half Term	27 th - 31 st May	
Inset Day	Monday 3 rd June	
Phonics Testing Week	w/c 10 th June	
Sports Week	w/c 17 th June	
Reserve Reception Sports Morning	Monday 24 th June followed by picnic lunch	10.30 am
Reserve Year 1 Sports Morning	Thursday 27 th June followed by picnic lunch	10.45 am
Reserve Year 2 Sports Morning	Friday 28 th June followed by picnic lunch	10.45 am
Transition Day	Wednesday 3 rd July	All day
Summer Fair	tbc	
School Reports to go home	Friday 5 th July	
Welcome Wednesday/Open Afternoon	Wednesday 10 th July	2.15 - 3.15 pm
Year 2 Concert for parents	Wednesday 17 th July	2.00 pm
Year 2 Concert for parents (no babies or pre-school children)	Thursday 18 th July	9.00 am
Year 2 Leaver's Disco	Thursday 18 th July	4.00 - 5.15 pm
Outside Playday	Friday 19 th July	All day
Year 2 Leaver's Assembly (for parents)	Tuesday 23 rd July	9.00 am
Last day of Term	Tuesday 23 rd July	

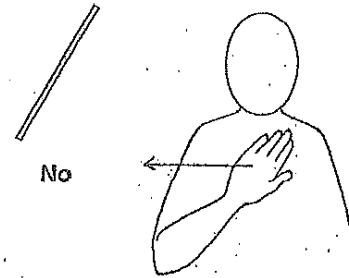


Makaton

We have been learning the following signs this month



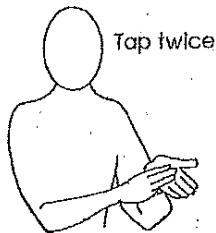
Help



No



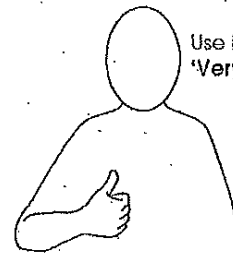
Mummy



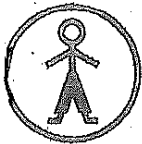
Tap twice



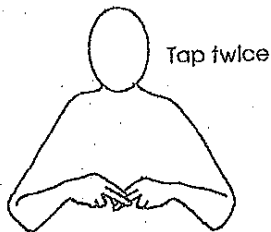
Good (1)



Use both hands for 'Very Good'



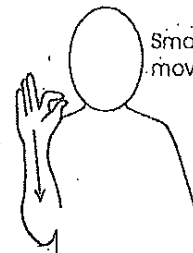
Daddy



Tap twice



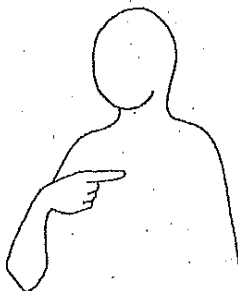
Good (2)



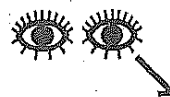
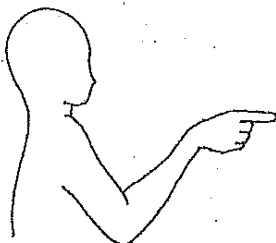
Small downward movement of arm



I



You



To Look



Two fingers are slightly apart

BOOK AND DONATE by
January 7th 2024

St Wilfrid's Hospice

Tree Cycle

Recycle your Christmas Tree with St Wilfrid's Hospice

You donate, we collect, we recycle!
For a suggested donation of £15, our
tree-mendous Hospice volunteers
will collect your real Christmas Tree
from your doorstep, and send them
to be recycled into mulch and
chippings for local farmland.

Please turn over for booking
instructions and postcodes

Proudly sponsored by

Registered with



FUNDRAISING
REGULATOR



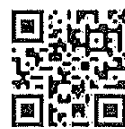
St Wilfrid's Hospice
Making a difference to local lives

We will be collecting real Christmas Trees from
January 12th - 15th 2024

Please make sure you that you book your collection by January 7th 2024 as
this is when we will be closing our bookings. If you have any questions, you
can get in touch with our fundraising team on fundraising@stwh.co.uk.

Thank you for supporting our vital hospice care services and making a
difference to local lives.

You can book a tree collection if you live in the following postcodes:
PO10, PO18, PO19, PO20, PO21, PO22, GU28, GU29, BN18



Book your collection by midnight on
Sunday 7th January 2024.

stwh.co.uk/christmas-trees

